



# KitchenAid

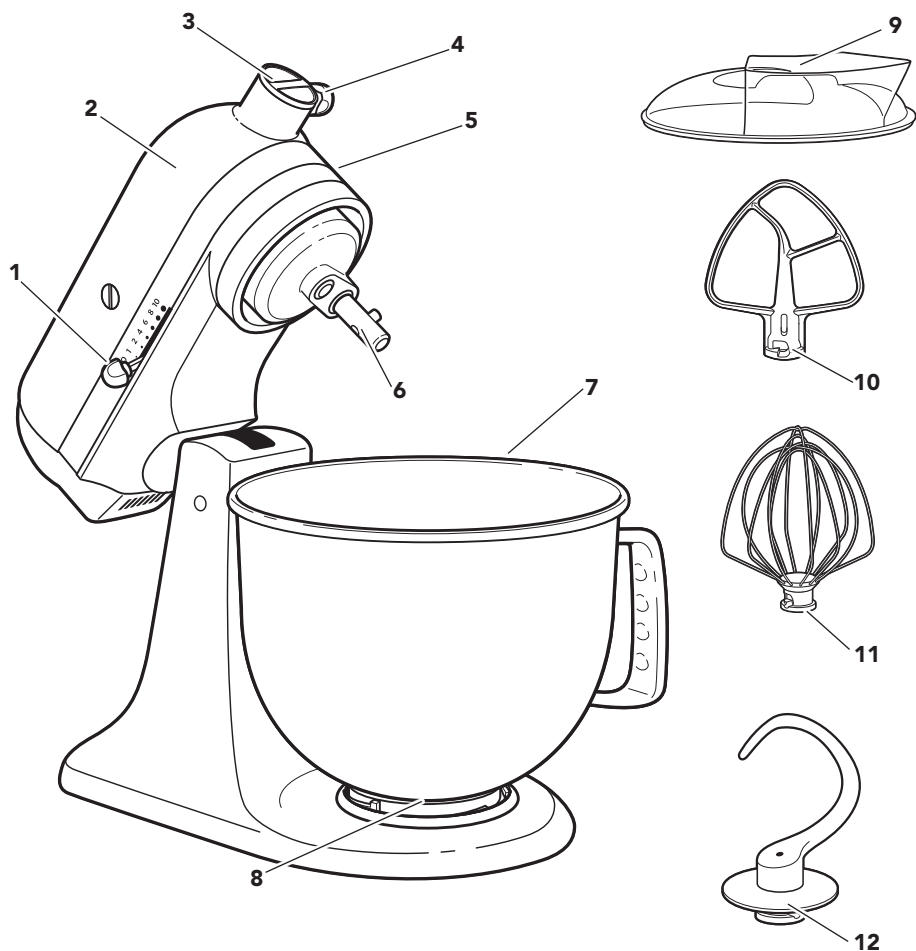
## Stand Mixer





# PARTS AND FEATURES

## TILT HEAD STAND MIXER PARTS AND ACCESSORIES



- |  |                         |
|--|-------------------------|
| 1 Speed control lever                  | 7 Stainless steel bowl* |
| 2 Motor head                           | 8 Bowl clamping plate   |
| 3 Attachment hub                       | 9 Pouring shield**      |
| 4 Attachment knob                      | 10 Flat beater          |
| 5 Motor head locking lever (not shown) | 11 Wire whip            |
| 6 Beater shaft                         | 12 Dough hook           |

\*Capacity and handle design vary by model.

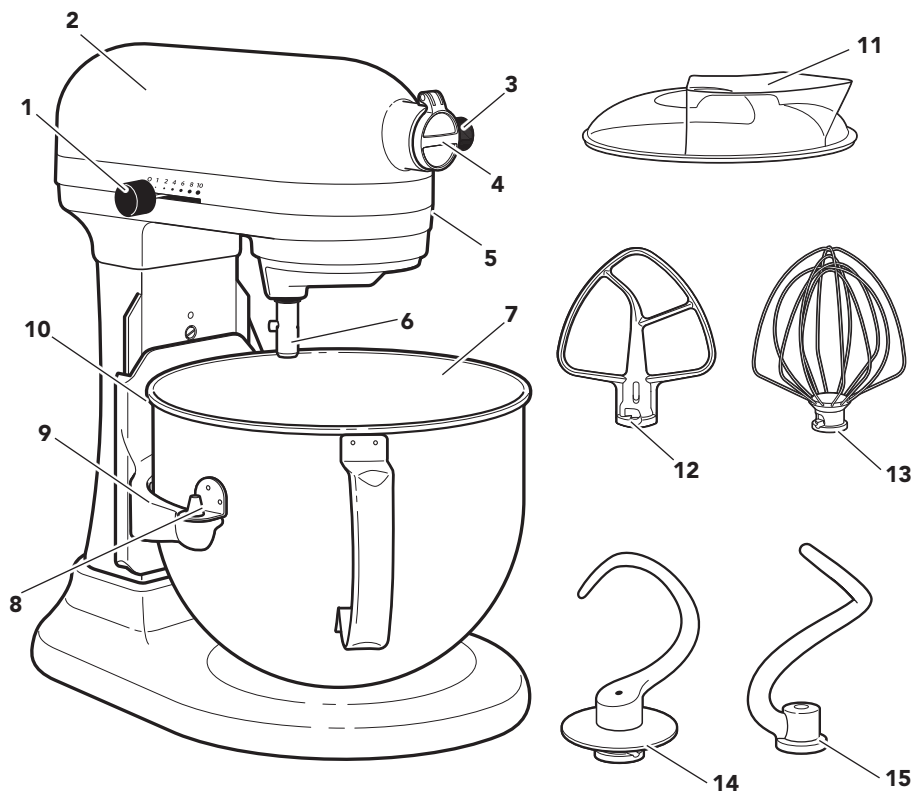
\*\*Included with select models only. Also available as an optional accessory.





# PARTS AND FEATURES

## BOWL LIFT STAND MIXER PARTS AND ACCESSORIES



- |   |                              |    |                                       |
|---|------------------------------|----|---------------------------------------|
| 1 | Speed control lever          | 9  | Bowl support                          |
| 2 | Motor head                   | 10 | Spring latch and bowl pin (not shown) |
| 3 | Attachment knob              | 11 | Pouring shield**                      |
| 4 | Attachment hub               | 12 | Flat beater                           |
| 5 | Bowl lift handle (not shown) | 13 | Wire whip                             |
| 6 | Beater shaft                 | 14 | Dough hook**                          |
| 7 | Stainless steel bowl*        | 15 | Dough hook***                         |
| 8 | Locating pins                |    |                                       |

\*Capacity and handle design vary by model.

\*\*Pouring shield and C-shaped dough hook are attached for the specified model. These are two optional accessories for 3KSM6583T, which can be purchased separately.

\*\*\*Included with the 3KSM6583 only.





## STAND MIXER SAFETY

### Your safety and the safety of others are very important.

We have provided many important safety messages in this manual and on your appliance. Always read and obey all safety messages.



This is the safety alert symbol.

This symbol alerts you to potential hazards that can kill or hurt you and others.

All safety messages will follow the safety alert symbol and either the word "DANGER" or "WARNING." These words mean:



**You can be killed or seriously injured if you don't immediately follow instructions.**



**You can be killed or seriously injured if you don't follow instructions.**

All safety messages will tell you what the potential hazard is, tell you how to reduce the chance of injury, and tell you what can happen if the instructions are not followed.

## IMPORTANT SAFEGUARDS

**When using electrical appliances, basic safety precautions should always be followed, including the following:**

1. Read all instructions. Misuse of appliance may result in personal injury.
2. To protect against risk of electrical shock do not put appliance in water or other liquid.
3. Children should be supervised to ensure that they do not play with the appliance.
4. Do not leave the Stand Mixer unattended while it is operating.
5. Turn the appliance OFF, then unplug from the outlet when not in use, before assembling or disassembling parts and before cleaning. To unplug, grasp the plug and pull from the outlet. Never pull from the power cord.
6. Avoid contacting moving parts. Keep hands, hair, and clothing, as well as spatulas and other utensils away from accessories during operation to reduce the risk of injury to persons and/or damage to the appliance.
7. Remove the flat beater, wire whip, or dough hook from the Stand Mixer before washing.
8. Do not operate any appliance with a damaged cord or plug or after the appliance has been dropped or damaged in any manner. Return appliance to the nearest Authorised Service Centre for examination, repair or adjustment.
9. The use of attachments not recommended or sold KitchenAid may cause fire, electrical shock, or injury.
10. Do not use the appliance outdoors.
11. If the supply cord is damaged, it must be replaced by the manufacturer, its service agent or similarly qualified persons in order to avoid a hazard.
12. To avoid product damage, do not use the mixer bowls in areas of high heat such as an oven, microwave, or on a stovetop.
13. Do not let cord hang over edge of table or counter.





## STAND MIXER SAFETY

14. This appliance is not intended for use by persons (including children) with reduced physical sensory or mental capabilities, or lack of experience and knowledge, unless they have been given supervision or instruction concerning use of the appliance by a person responsible for their safety.
15. Refer to the “Care and Cleaning” section for instructions on cleaning the surfaces in contact with food.
16. This appliance is intended to be used in household and similar applications such as:
  - staff kitchen areas in shops, offices, or other working environments;
  - farmhouses;
  - by clients in hotels, motels and other residential type environments;
  - bed and breakfast type environments.

## SAVE THESE INSTRUCTIONS

### ELECTRICAL REQUIREMENTS

**⚠ WARNING**



**Electrical Shock Hazard**

**Plug into an earthed outlet.**

**Do not remove earth prong.**

**Do not use an adapter.**

**Do not use an extension cord.**

**Failure to follow these instructions can result in death, fire, or electrical shock.**

**Voltage:** 110 VAC

**Frequency:** 60 HZ

**NOTE:** If the plug does not fit in the outlet, contact a qualified electrician. Do not modify the plug in any way. Do not use an adapter.

Do not use an extension cord. If the power supply cord is too short, have a qualified electrician or service technician install an outlet near the appliance.



# USING THE STAND MIXER

## SPEED CONTROL GUIDE

Speed	Action	Description
1	Stir	For slow stirring, combining, mashing, starting all mixing procedures. Use to add flour and dry ingredients to batter and to add liquids to dry ingredients. Do not use Speed 1 to mix or knead yeast doughs.
2	Slow Mixing	For slow mixing, mashing, faster stirring. Use to mix and knead yeast doughs, heavy batters and candies, start mashing potatoes or other vegetables, cut shortening into flour, or mix thin or splashy batters.
4	Mixing, Beating	For mixing semi-heavy batters, such as cookies. Use to cream sugar and shortening and to add sugar to egg whites for meringues. Medium speed for cake mixes. Use with attachments: Food Grinder, Rotor Slicer/Shredder, and Fruit/Vegetable Strainer.
6	Beating, Creaming	For medium fast beating (creaming) or whipping. Use to finish mixing cake, doughnut, and other batters. High speed for cake mixes. Use with Citrus Juicer attachment.
8	Fast Beating, Whipping	For whipping cream, egg whites, and boiled frostings.
10	Fast Whipping	For whipping small amounts of cream and egg whites. Use with Pasta Maker and Grain Mill attachments.

**NOTE:** The speed control lever can be set between the speeds listed in the above chart to obtain Speeds 3, 5, 7, and 9 if a finer adjustment is required. Do not exceed Speed 2 when preparing yeast doughs as this may cause damage to the Stand Mixer.

## ACCESSORY GUIDE

Accessory	Use to mix	Description
Flat Beater	Normal to heavy mixtures	Cakes, creamed frostings, candies, cookies, biscuits, pie pastry, crumpets, meat loaf, mashed potatoes
Wire Whip	Mixtures that need air incorporated	Eggs, egg whites, heavy cream, boiled frostings, sponge cakes, mayonnaise, some candies
Dough Hook	Mixing and kneading yeast doughs	Breads, rolls, pizza dough, coffee cakes, buns





# USING THE STAND MIXER

## ASSEMBLING/DISASSEMBLING YOUR TILT HEAD STAND MIXER

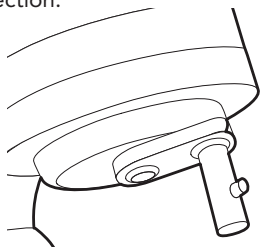


### To attach bowl:

1. Be sure speed control is off.
2. Tilt motor head back.
3. Place bowl on bowl clamping plate.
4. Turn bowl gently in clockwise direction (see illustration above).
5. Sit pouring shield on bowl.\*

### To remove bowl:

1. Turn speed control to O (off).
2. Tilt motor head back.
3. Turn bowl in counterclockwise direction.

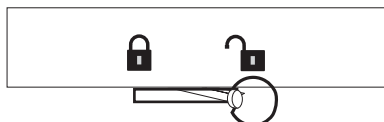


### To attach flat beater, wire whip, or dough hook:

1. Turn speed control to O (off) and unplug.
2. Raise motor head.
3. Slip beater onto beater shaft and press upward as far as possible.
4. Turn beater to right, hooking beater over pin on shaft.

### To remove flat beater, wire whip, or dough hook:

1. Turn speed control to O (off) and unplug.
2. Raise motor head.
3. Press beater upward as far as possible and turn left.
4. Pull beater from beater shaft.



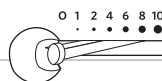
### To lock motor head in raised position:

1. Push locking lever up into unlock position and hold.
2. Tilt motor head back.
3. Move locking lever into lock position.

### To lock motor head in operating position:

1. Turn speed control to 0 (off) and unplug.
2. Unlock the motor head and move it down.
3. Lock the head to keep it down.
4. Before mixing, test lock by attempting to raise the motor head.

**NOTE:** Motor head should always be kept in lock position when using Stand Mixer.



### To operate speed control:

1. Speed control lever should always be set on lowest speed for starting, then gradually moved to desired higher speed to avoid splashing ingredients out of bowl. See "Speed control guide."

\*Included with select models only. Also available as an optional accessory.



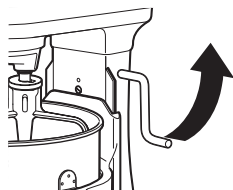


# USING THE STAND MIXER

## ASSEMBLING/DISASSEMBLING YOUR BOWL LIFT STAND MIXER

### To attach bowl:

1. Be sure speed control is off.
2. Place bowl lift handle in down position.
3. Fit bowl supports over locating pins.
4. Press down on back of bowl until bowl pin snaps into spring latch.
5. Sit pouring shield\* on bowl.
6. Raise bowl before mixing.



### To remove bowl:

1. Place bowl lift handle in down position.
2. Grasp bowl handle and lift straight up and off locating pins.

### To raise bowl:

1. Rotate handle back and up until it snaps into the vertical locked position.
2. Bowl must always be in raised, locked position when mixing.

### To lower bowl:

1. Rotate handle back and down.

### To attach pouring shield\*:

1. Turn speed control to O (off).
2. Unplug Stand Mixer or disconnect power.
3. Attach flat beater, dough hook, or wire whip and bowl.
4. From the front of the Stand Mixer, slide the pouring shield over the bowl until the shield is centred. The bottom rim of the shield should fit within the bowl.

### To use pouring shield\*:

1. For best results, rotate the shield so the motor head covers the U-shaped gap in the shield. The pouring chute will be just to the right of the attachment hub as you face the Stand Mixer.
2. Pour the ingredients into the bowl through the pouring chute.

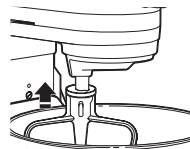
**NOTE:** Check that bowl and pouring shield are properly in place.

### To remove pouring shield\*:

1. Turn speed control to O (off).
2. Unplug Stand Mixer or disconnect power.
3. Lift the front of the pouring shield clear of the bowl rim and pull forward.
4. Remove attachment and bowl.

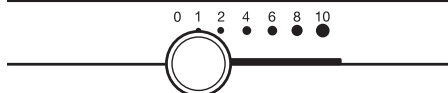
### To attach flat beater, wire whip, or dough hook:

1. Turn speed control to O (off) and unplug.
2. Raise motor head.
3. Slip beater onto beater shaft and press upward as far as possible.
4. Turn beater to right, hooking beater over pin on shaft.



### To remove flat beater, wire whip, or dough hook:

1. Turn speed control to O (off) and unplug.
2. Raise motor head.
3. Press beater upward as far as possible and turn left.
4. Pull beater from beater shaft.



### To operate control speed:

1. Speed control lever should always be set on lowest speed for starting, then gradually moved to desired higher speed to avoid splashing ingredients out of bowl. See "Speed control guide."

### Overload reset button (Model 5KPM50 only):

If the Stand Mixer is overloaded, the overload reset button will pop out and the Stand Mixer will shut off. Turn the speed control lever to O (off). Wait a few minutes, then push in the overload reset button. Turn the speed control lever to the desired speed and continue mixing.

\*Included with select models only. Also available as an optional accessory.

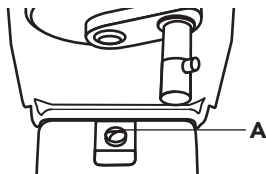




# USING THE STAND MIXER

## BEATER TO BOWL CLEARANCE

Your Stand Mixer is adjusted at the factory so that the flat beater just clears the bottom of the bowl. If for any reason the flat beater strikes the bottom of the bowl or is too far away from the bowl, clearance can be corrected as follows:

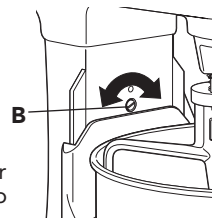


### Tilt head

1. Lift motor head.
2. Turn screw (A) slightly to the left to raise flat beater and to the right to lower flat beater.
3. Make adjustment with flat beater, so it just clears surface of bowl.

### Bowl lift

1. Place bowl lift handle in down position.
2. Turn screw (B) slightly to the left to raise flat beater and to the right to lower flat beater.
3. Make adjustments with flat beater, so it just clears surface of bowl.

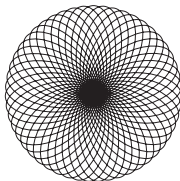


**NOTE:** Flat beater must not strike on bottom or side of bowl when properly adjusted. If beater or wire whip is adjusted too close so that it strikes bottom of bowl, coating may wear off of beater or wires may wear through on wire whip.

Scraping sides of bowl may be necessary under certain conditions regardless of beater adjustment. Stand Mixer must be stopped to scrape bowl or damage to Stand Mixer may occur.

## PLANETARY MIXING ACTION

During operation, the flat beater moves around the stationary bowl, at the same time turning in the opposite direction on its own axis. The diagram shows the complete coverage of the bowl made by the path of the beater.



Your KitchenAid Stand Mixer will mix faster and more thoroughly than most other electric mixers. Therefore, the mixing time in most recipes must be adjusted to avoid overbeating.





## CARE AND CLEANING

### **! WARNING**

**ELECTRICAL SHOCK HAZARD**  
**ALWAYS BE SURE TO UNPLUG**  
**MIXER BEFORE CLEANING TO AVOID**  
**POSSIBLE ELECTRICAL SHOCK.**  
 Wipe mixer with a damp cloth. **DO**  
**NOT IMMERSE IN WATER. Wipe off**  
**beater shaft frequently, removing any**  
**residue that may accumulate.**

Bowl, white flat beater, white dough hook and pouring shield\* may be washed in an automatic dishwasher. The wire whip and these other basic accessories are not dishwasher safe. Clean thoroughly in hot, sudsy water and rinse completely before drying.

**Lubrication:** Motor bearings are self-lubricating and should require no further attention under normal use.

## TROUBLESHOOTING

PROBLEM	SOLUTION
Please read the following before calling your service centre:	The Stand Mixer may warm up during use. Under heavy loads with extended mixing time periods, you may not be able to comfortably touch the top of the unit. This is normal.
	The Stand Mixer may emit a pungent odor, especially when new. This is common with electric motors. If flat beater strikes bowl, stop the Stand Mixer. See "Beater to bowl clearance."
If your Stand Mixer should malfunction or fail to operate, please check the following:	Is your Stand Mixer plugged in?
	Is the fuse in the circuit to the Stand Mixer in working order? If you have a circuit breaker box, be sure the circuit is closed.
	Are the bowl and pouring shield* properly in place?
How To Obtain Service:	All service should be handled locally by an authorised KitchenAid Service Centre. Contact the dealer from whom the unit was purchased to obtain the name of the nearest authorised KitchenAid Service Centre.

\*Included with select models only. Also available as an optional accessory.

©2019 All rights reserved.

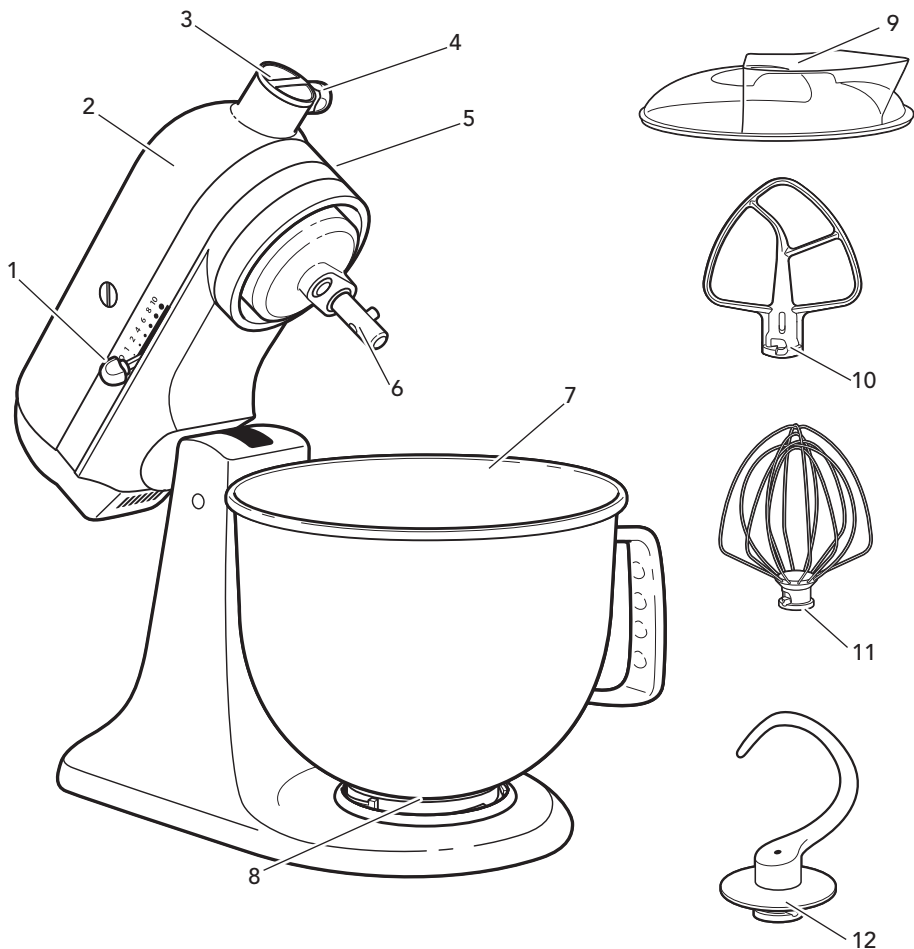
KITCHENAID and the design of the stand mixer are trademarks in the U.S. and elsewhere.





## 零件與功能

抬頭式桌上型攪拌機及配件



繁體中文

- |                 |           |
|-----------------|-----------|
| 1 速度控制鈕         | 7 不銹鋼攪拌盆* |
| 2 電動頭           | 8 攪拌盆轉盤   |
| 3 配件套筒          | 9 透明碗罩**  |
| 4 配件旋鈕          | 10 平攪拌槳   |
| 5 電動頭鎖定桿 (不在圖中) | 11 打蛋器    |
| 6 攪拌軸           | 12 麵團鉤    |

\*容量及把手設計依型號設計而有所不同。

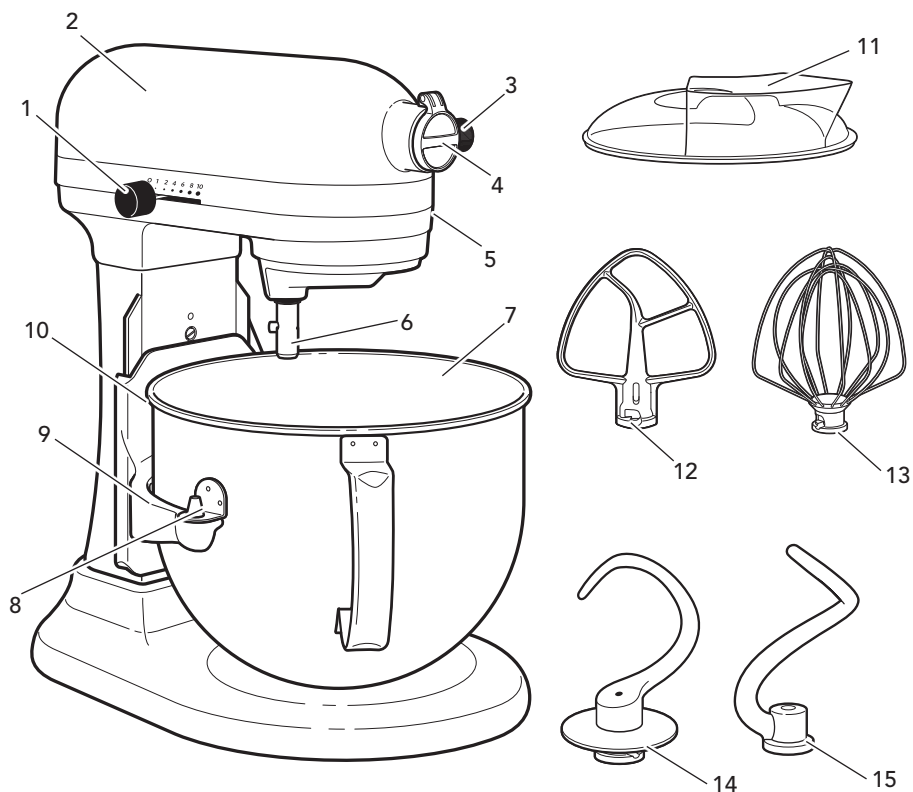
\*\*僅限指定型號有附。可另行選購。





## 零件與功能

升降式桌上型攪拌機及配件



- |                 |                    |
|-----------------|--------------------|
| 1 速度控制鈕         | 9 攪拌盆支架            |
| 2 電動頭           | 10 彈簧鎖和攪拌盆卡榫(不在圖中) |
| 3 配件旋鈕          | 11 透明碗罩**          |
| 4 配件套筒          | 12 平攪拌槳            |
| 5 攪拌盆升降把手(不在圖中) | 13 打蛋器             |
| 6 攪拌軸           | 14 麵團鉤**           |
| 7 不鏽鋼攪拌盆*       | 15 麵團鉤***          |
| 8 定位柱           |                    |

\*容量及把手設計依型號不同而有差異。

\*\*透明碗罩及C型麵團鉤為指定機型有附。此二配件為3KSM6583T的選購配件，可另行購買。

\*\*\*僅包含於3KSM6583T型號內。



# 桌上型攪拌機安全事項

## 您與他人的安全都不容忽視。

本公司已在這份手冊與電器上提供許多重要的安全提醒，請務必閱讀並遵守所有安全提醒。



這是安全提示符號。

這個符號可提醒您有潛在危險，如有不慎可能導致您或他人傷亡。所有安全提醒的前方都有安全提示符號以及「危險」或「警告」字樣，分別代表：



若不立即遵守指示，則有死亡或受重傷之虞。



若不遵守指示，則有死亡或受重傷之虞。

所有安全提醒都會告訴您有哪些潛在危險、如何降低受傷機率，以及不遵守指示會有哪些後果。

中文說明書

## 重要安全注意事項

使用電器時應確實遵守基本安全措施，包括以下各項：

1. 閱讀所有指示。電器使用錯誤可能導致人員受傷。
2. 為避免觸電，請勿將電器放在水中或其他液體中。
3. 請務必監督兒童，避免他們把玩電器。
4. 操作桌上型攪拌機時人不可離開。
5. 在不使用時、組裝或拆卸零件前或進行清潔之前，請關閉本家用電器，切斷電源。切斷電源時，請緊握插頭，從插座拔出。
6. 使用電器時，雙手、毛髮、衣物、攪拌刮刀和其他廚具必須遠離配件，減少受傷或電器損壞的風險。
7. 清洗前請先將桌上型攪拌機的平攪拌槳、打蛋器或麵團鉤取出。
8. 電源線破損、插頭毀損、電器掉落地面或有任何損傷後，請勿使用任何電器。請將電器送到最近的合格維修中心進行檢測、維修或調整。
9. 使用未經 KitchenAid 推薦或販售的配件可能有失火、觸電或受傷之虞。
10. 請勿在戶外使用本電器。
11. 電源線破損時請交由製造商、維修人員或類似合格專業人員更換，以免發生意外。
12. 為避免產品受損，請勿在高熱之處使用桌上型攪拌機攪拌盆，例如烤箱、微波爐或爐台。
13. 請勿讓電源線垂吊在桌子或櫃檯邊緣。
14. 有肢體、感官、心智障礙者，或者缺乏操作經驗及知識者(包括兒童)不可使用本電器，除非有負責安全把關的人士從旁監督或教導使用方式。
15. 請參閱“保養與清潔”章節，了解與食物接觸的表面的清潔指示。
16. 本電器適合家庭和類似用途，例如：
  - 商店、辦公室或其他工作環境的員工用餐區域。
  - 農舍。
  - 飯店、汽車旅館和其他住家類型環境的顧客。
  - 民宿類型環境。

### 請妥善保存上述安全說明



# 桌上型攪拌機安全事項

## 電氣需求

**警告**



**觸電危險**

將電源線連接到接地電源。

請勿拔掉接地插腳。

請勿使用變壓器。

請勿使用延長線。

違反這些指示可能導致人員傷亡、失火或觸電。

電壓: 110 VAC

頻率: 60 HZ

註: 如果插頭無法插入插座, 請洽合格電工。

請勿以任何方式改造插頭。

請勿使用變壓器。

請勿使用延長線。若電源線太短, 請由合格電工或技師在電器附近安裝插座。





# 使用桌上型攪拌機

## 速度調控指南

速度	動作	說明
1	攪拌	適合慢速攪拌、混合、搗碎，也是所有攪拌程序的起點。可用於將麵粉和乾食材加入麵糊，以及將液體加入乾食材。請勿使用 1 檔速度來攪拌或揉捏酵母生麵團。
2	慢速混合	適合慢速混合、搗碎、快速攪拌。用於攪拌與揉捏酵母生麵團、較重的麵糊和糖果、開始搗碎馬鈴薯或其他蔬菜、將奶油切入麵粉、混合較稀或容易噴濺的麵糊。
4	攪拌、混打	適合用來攪拌有點重的麵糊，例如糕餅。用來將糖和奶油打成奶油狀，並將糖加入蛋白以便製作蛋白霜。製作蛋糕粉的中速檔位。可搭配以下配件：絞碎器、蔬菜切絲/切片器、果蔬研磨機。
6	混打、打成奶油狀	用於中等速度混打(打成奶油狀)或攪拌。可用於完成蛋糕的攪拌工作、甜甜圈和其他麵糊。製作蛋糕粉的快速檔位。可搭配柑橘榨汁機配件。
8	快速混打、攪拌	用於攪拌奶油、蛋白和義式蛋白霜。
10	快速攪拌	適合攪拌少量的奶油和蛋白。可搭配義大利麵器和磨粉器配件。

中文說明書

註：如要微調速度，可將速度控制鈕設定在上圖所列的速度之間，以達到 3、5、7、9 檔的速度。製作酵母生麵團時請勿超出 2 檔，否則可能導致桌上型攪拌機受損。

## 配件使用說明

配件	用於攪拌	說明
平攪拌槳	一般至重型混合物	蛋糕、奶油糖霜、糖果、小甜餅、餅乾、糕點、鬆餅、肉餅、馬鈴薯泥
打蛋器	需要加入空氣的混合物	雞蛋、蛋白、鮮奶油、義式蛋白霜、海綿蛋糕、美乃滋、某些糖果
麵團鉤	酵母生麵團的攪拌與揉捏功能	麵包、麵包卷、披薩麵團、咖啡點心、小麵包



# 使用桌上型攪拌機

## 組裝/拆卸您的抬頭式桌上型攪拌機

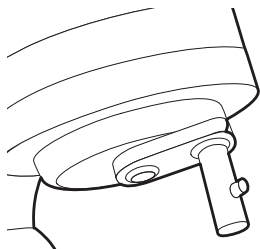


### 安裝攪拌盆：

1. 請務必將速度控制鈕撥到“0”（關）的位置。
2. 將電動頭往後倒。
3. 將攪拌盆放在攪拌盆轉盤上。
4. 將攪拌盆朝順時針方向慢慢旋轉（見上圖）。
5. 將透明碗罩裝在攪拌盆上。\*

### 取出攪拌盆：

1. 將速度控制鈕撥到“0”（關）的位置。
2. 將電動頭往後倒。
3. 將攪拌盆朝逆時針方向旋轉。

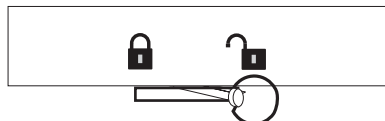


### 安裝平攪拌槳、打蛋器或麵團鉤

1. 將速度控制鈕撥到“0”（關）的位置並拔下插頭。
2. 抬起電動頭。
3. 將攪拌槳扣入攪拌軸，然後儘量往上按。
4. 將攪拌槳轉向右邊，讓攪拌槳扣住攪拌軸上的樅頭。

### 取出平攪拌槳、打蛋器或麵團鉤

1. 將速度控制鈕撥到“0”（關）的位置並拔下插頭。
2. 抬起電動頭。
3. 將攪拌槳盡量往上按並向左轉。
4. 將攪拌槳拉出攪拌軸。



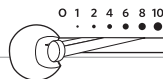
### 將電動頭固定在升起位置：

1. 將鎖定桿往“鬆開”位置推。
2. 將電動頭往後倒。
3. 請注意電動機頭固定時，鎖定桿是會自動彈回“鎖定”位置。

### 將電動頭固定在操作位置：

1. 將速度控制鈕撥到“0”（關）的位置，並且拔下插頭。
2. 鬆開“鎖定桿”，並將機頭放下。
3. 將“鎖定桿”撥到鎖定位置，並保持機頭處在放下的位置。
4. 在開始操作之前，請嘗試抬起機頭，以測試機頭是否已經鎖緊。

註：使用桌上型攪拌機時，電動頭必須保持在「鎖定」位置。



### 操作速度控制鈕：

1. 速度控制鈕一開始必須設定在最低速檔，然後才逐漸往您要的高速檔移動，避免食材濺出攪拌盆外。請參閱「速度調控指南」。

\*僅限指定型號有附。可另行選購。

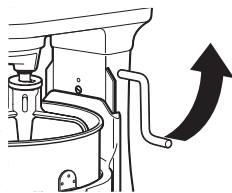


# 使用桌上型攪拌機

## 組裝/拆卸您的升降式桌上型攪拌機

### 安裝攪拌盆：

1. 請務必將速度控制鈕撥到“0”（關）的位置。
2. 把攪拌盆升降把手放置於低位。
3. 將攪拌盆支架裝到定位柱上。
4. 將攪拌盆後面往下壓，讓攪拌盆卡榫扣進彈簧鎖。
5. 將透明碗罩\*裝在攪拌盆上。
6. 攪拌前升起攪拌盆。



### 取出攪拌盆：

1. 把攪拌盆升降把手放置於低位。
2. 握住攪拌盆把手直接往上提起，脫離定位柱。

### 升起攪拌盆：

1. 將把手旋轉到後上方，扣入固定的垂直位置。
2. 攪拌盆在攪拌期間必須在升起的鎖定位置。

### 降低攪拌盆：

1. 將把手旋轉到後下方。

### 安裝透明碗罩\*：

1. 將速度控制鈕撥到“0”（關）的位置。
2. 拔下桌上型攪拌機的插頭或切斷電源。
3. 安裝平攪拌槳、麵團鉤或打蛋器以及攪拌盆。
4. 桌上型攪拌機的正面將透明碗罩推到攪拌盆上方，使透明碗罩位於中央位置。透明碗罩的底部邊緣必須在攪拌盆內側。

### 使用透明碗罩\*：

1. 為求最佳效果，請旋轉透明碗罩，讓電動頭蓋住透明碗罩的 U 形缺口。當您面對桌上型攪拌機時，送料管會剛好在配件套筒右邊。
2. 透過送料管將食材倒入攪拌盆。

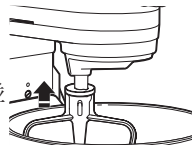
註：檢查攪拌盆和透明碗罩是否在正確位置。

### 取下透明碗罩\*：

1. 將速度控制鈕撥到“0”（關）的位置。
2. 拔下桌上型攪拌機的插頭或切斷電源。
3. 拿起送料管罩的前端使其脫離攪拌盆邊緣，然後向前取出。
4. 取出配件和攪拌盆。

### 安裝平攪拌槳、打蛋器或麵團鉤

1. 將速度控制鈕撥到“0”（關）的位置並拔下插頭。
2. 抬起電動頭。
3. 將攪拌槳扣入攪拌軸，然後儘量往上按。
4. 將攪拌槳轉向右邊，讓攪拌槳扣住攪拌軸上的榫頭。



### 取出平攪拌槳、打蛋器或麵團鉤

1. 將速度控制鈕撥到“0”（關）的位置並拔下插頭。
2. 降低攪拌盆。
3. 將攪拌槳盡量往上按並向左轉。
4. 將攪拌槳拉出攪拌軸。

0 1 2 4 6 8 10



### 控制速度：

1. 速度控制鈕一開始必須設定在最低速檔，然後才逐漸往您要的高速檔移動，避免食材濺出攪拌盆外。請參閱「速度調控指南」。

### 過載重設按鈕（僅限 5KPM50 機型）：

桌上型攪拌機會在過載時讓過載重設按鈕自動跳起並自動關機。將速度控制鈕撥到“0”（關）位置。等幾分鐘，然後按下過載重設按鈕。將速度控制鈕撥到您要的速度檔位，繼續攪拌。

\*僅限指定型號有附。可另行選購。

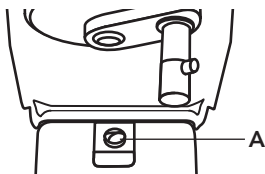




## 使用桌上型攪拌機

### 攪拌槳到攪拌盆的間隙

桌上型攪拌機出廠前就調整過，因此平攪拌槳剛好不會碰到攪拌盆底。如果平攪拌槳因故碰到攪拌盆底或是距離攪拌盆底太遠，可根據以下方式調整：

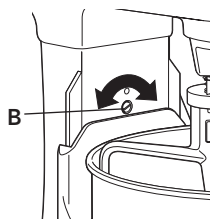


#### 抬頭式

1. 抬起電動頭。
2. 將 A 處螺絲微微往左轉可使平攪拌槳上升，向右轉可使平攪拌槳下降。
3. 將平攪拌槳調整到剛好沒碰到攪拌盆表面為止。

#### 升降式

1. 把攪拌盆升降把手放置於低位。
2. 將 B 處螺絲微微往左轉可使平攪拌槳上升，向右轉可使平攪拌槳下降。
3. 將平攪拌槳調整到剛好沒碰到攪拌盆表面為止。

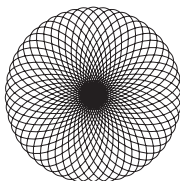


註：平攪拌槳在經過適當調整後就不該碰到攪拌盆底部或側壁。如果攪拌槳或打蛋器調整不當因而撞擊攪拌盆底，攪拌槳的塗層可能因此磨損，打蛋器的鐵線也會穿透。

無論如何調整攪拌槳，有時還是必須刮掉攪拌盆側壁上的食材。刮掉桌上型攪拌機側壁上的食材時必須停機，以免桌上型攪拌機受損。

### 行星攪拌動作

平攪拌槳在使用時會沿著不動的攪拌盆周圍移動，同時以本身為軸心朝著反方向轉動。本圖顯示攪拌槳移動路線可涵蓋的攪拌盆區域。



KitchenAid 桌上型攪拌機比大多數電動攪拌機的速度更快、攪拌更徹底，所以大部分菜譜的攪拌時間都經過調整，以免混打過度。



# 保養與清潔

**警告**

**觸電危險**

在清潔之前，務必拔下攪拌機的插頭，以免造成觸電危險。請使用柔軟的濕布擦拭攪拌機。切勿浸泡在水中。時常擦拭攪拌軸，去除可能累積的任何殘留物。

您可以將攪拌盆、白色平攪拌槳、白色麵團鉤和透明碗罩放到洗碗機裡清洗。打蛋器與其他基礎配件不可放入洗碗機裡清洗。請用熱肥皂水徹底清洗，並在擦乾前以清水沖乾淨。

上油：馬達軸承可自動潤滑，正常使用時應該不需要保養。

中文說明書

# 故障排除

問題	解決方案
撥打客服中心以前請閱讀以下說明：	<p>桌上型攪拌機可能在使用期間變熱。如果長時間攪拌大量食材，機體上方可能會非常灼熱，這是正常現象。</p> <p>桌上型攪拌機可能散發出臭味，剛剛購買的新機尤其如此，這是電動馬達的常見現象。如果平攪拌槳撞到攪拌盆，請停止使用桌上型攪拌機。請參閱「攪拌槳到攪拌盆的間隙」。</p>
如果桌上型攪拌機故障或無法使用，請檢查以下事項：	<p>桌上型攪拌機插上電源了嗎？</p> <p>通往桌上型攪拌機的電力迴路保險絲是否正常？如果您有斷路器，則必須檢查迴路是否正常。</p> <p>攪拌盆和透明碗罩*是否在正確位置？</p>
獲得維修服務的方式：	所有維修服務都由當地的 KitchenAid 合格維修中心負責處理。請向購買商家詢問附近的 KitchenAid 合格維修單位名稱。

\*僅限指定型號有附。可另行選購。

©2019 版權所有。

KITCHENAID 和桌上型攪拌機設計是在美國和其他地區的商標。

# KITCHENAID 凱膳怡產品

## 保固維修服務說明及應注意事項

以下保固維修服務，僅限於在台灣購買的KITCHENAID下列家用系列產品（該產品僅限於家用）。

### 1. 保固維修範圍及說明：

產品類別及型號	期限	免費保固維修內容及項目	其他說明
家用桌上型攪拌機	5年	經由特力集團（特家公司）或特力集團（特家公司）授權維修點檢查機器後，確定為功能故障或瑕疵，消費者得進行免費維修或更換零配件服務。前述“功能故障或瑕疵”指產品無法正常運作，漏油，漏電及依據正常操作程序無法運作等。	<ol style="list-style-type: none"> <li>桌上型攪拌機（攪拌盆、打蛋器、麵團勾、平攪拌槳、透明碗罩）或桌上型果汁機配件（攪拌杯體、杯蓋、投料杯及攪拌棒）等屬耗材不在前述免費保固範圍。</li> <li>前述1. 配件如自購買日起算7日內出現配件產品品質瑕疵問題，可進行退換處理。相關退換貨政策請見附錄。</li> </ol>
桌上型果汁機 （部分機型延長保固至7年）	2年		
桌上型攪拌機配件 （如攪碎器、製香腸器、壓麵器等）  專業食物調理機、迷你食物調理機、手持攪拌棒系列、電熱水壺、咖啡機、烤麵包機、烤箱、手持打蛋器、榨汁機、微波爐等系列主機	1年	經由特力集團（特家公司）或特力集團（特家公司）授權維修點檢查機器或配件後，確定為功能故障或瑕疵，消費者得進行免費維修或更換零配件服務。對部分無法進行維修的產品，得更換全新產品（若無相同型號產品，將以功能近似產品替代）	<ol style="list-style-type: none"> <li>配件組內用於清潔的毛刷、刀盤、刀頭、調理機的食材碗、蓋子、投料管、攪碎刀、打蛋器等均屬耗材，不在前述免費保固範圍內。</li> <li>產品在前述保固期間內，如出現產品品質瑕疵問題，可進行退換處理。相關退換貨政策請見附錄。</li> </ol>



## 2. 保固服務適用條件：

- 一、產品保固期限：自購買之次日起算，如果消費者無法提出有效購買憑證，則依照產品序號中的生產日期作為保固維修期的起算日期。
- 二、有效購買憑證：KitchenAid 產品的有效憑證包括購買發票、收據、訂購截圖、原廠保證書等。
- 三、產品送修時，請以該產品之原來外箱，將送修產品裝箱打包，以避免碰撞。（因運送過程導致的外觀受損不在保固範圍內）。
- 四、原廠保障書須加蓋經銷商店章（公司名稱、電話及地址須可辨認），填寫購買日期，本保證書始正式生效。
- 五、若消費者未檢附保固應備資料或超過保固期限，消費者於產品送修時，將由專人進行費用報價。經報價後，若消費者選擇不維修，須支付新台幣300元檢測費及來回運費。
- 六、產品作商業/營業用途需送修時，比照第五條規定辦理並收取維修費用。
- 七、非保固服務範圍之產品送修時，比照第五條規定辦理並收取維修費用。
- 八、更換前已損壞之零件，將歸屬本公司所有並以回收處理。

## 3. 下列情況將被排除於保固維持服務範圍：

1. 產品曾因錯誤操作，疏忽或因天災人禍等意外事件導致機身或機件損壞；
2. 產品曾被非特力集團（特家公司）或特力集團（特家公司）授權維修點之人員修理或改裝；
3. 產品機身號碼曾被轉換、塗改或除去；
4. 產品不按原廠提供之安裝提示；
5. 超出產品保固維修期間之外；
6. 非自特力集團（特家公司）或特力集團（特家公司）授權通路購入之產品（水貨，前代理商售出產品不予保固維修）；

對於上述情況產生爭議，特力集團（特家公司）將保留最終判斷之權利，並以此為準。



## 附錄

時間點	可退貨範圍	說明
網絡購物依購買網站告示之鑑賞期內	無條件退貨	1. 退貨產品（含隨機配件、贈品、彩盒外箱）需完整無缺。 2. 產品曾被使用者，不適用無條件退换货。
實體店面購物/網路購物收到超過鑑賞期,但產品仍在保固期內	產品功能問題	1. 經特力集團（特家公司）檢測後確認產品無法正常運作，得退换货。 2. 自前述通路購買產品超過鑑賞期，不接受因產品外觀問題的退换货。
	主機免費維修	1. 確定為產品品質瑕疵無法維修，得退换货。 2. 聯絡客服中心 0800-365-588
保固期限外	收費維修	請聯絡客服中心 0800-365-588

特力集團（特家公司）保留以上所有條款之解釋。

請注意：消費者應於收到產品後，盡速檢查，如發現有應由特力集團（特家公司）負責之瑕疵時，應於收到後7日內通知特力集團（特家公司）；但有不能立即發現之瑕疵者，應於發現之日起7日內通知特力集團（特家公司）。未於上述期間內通知者，視為接受所收到之產品，除本保固維修服務說明及應注意事項另有約定者外，消費者喪失其瑕疵擔保請求權。前項約定，於特力集團（特家公司）故意不告知消費者瑕疵時不適用之，保證書另有有利於消費者之約定者，亦同。







# KitchenAid

©2019 All rights reserved.  
KITCHENAID and the design of the stand mixer are trademarks in the U.S. and elsewhere.

版權所有。  
KITCHENAID 和桌上型攪拌機設計是在美國和其他地區的商標。

W11391726A

09/19

