

# GET READY



## DISCOVER MORE AT [KITCHENAID.COM/QUICKSTART](https://kitchenaid.com/quickstart)

For exciting recipes, demo videos, product registration,  
and more — our quick start page has what you need  
to help you get the most from your new product.

RECIPES



GUIDES



VIDEOS



SUPPORT



REGISTER



[KitchenAid.com](https://kitchenaid.com) | [KitchenAid.ca](https://kitchenaid.ca) | USA: 1.800.541.6390 | Canada: 1.800.807.6777

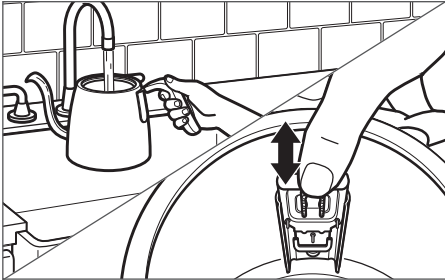
W11104441B  
KNK1012  
02/18

®/™ ©2018 KitchenAid. All rights reserved. Used under license in Canada.

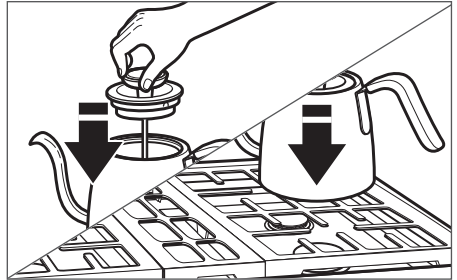
# GET STARTED

## QUICK START GUIDE

In a few easy steps, you'll be on your way to enjoying something delicious!  
For complete instructions and videos, go online to [kitchenaid.com/quickstart](http://kitchenaid.com/quickstart).

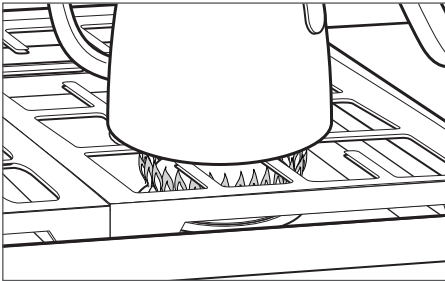


1. Remove the lid, fill the Kettle with room temperature water, and pour at each flow control setting to find your preferred flow control.



2. Fill the Kettle with water, replace the lid, and place on your stovetop burner.

**NOTE:** Your Stovetop Precision Kettle can be used on all cooking surfaces, including induction.



3. Turn burner on to the appropriate level (If using gas stovetop, do not allow gas flames to extend up the side of the Kettle).



4. Once the built-in thermometer indicates that the desired temperature has been reached, turn off the heat and remove the Kettle from the burner.

### BREW/STEEP TEMPERATURE CHART

BEVERAGE	Coffee	Green Tea	White Tea	Oolong Tea	Black Tea	Herbal Tea
SUGGESTED TEMPERATURE (C°/F°)	92-96°	80°	85°	90°	95°	100°
	196-205°	176°	185°	194°	203°	212°
SUGGESTED BREW/STEEP TIME (MINUTES)	3-5	1-3	3-5	3-5	4-5	5-7

**NOTE:** For Brew/Steep information at different altitudes, consult your Instructions manual.

# AUX FOURNEAUX!



## DÉCOUVREZ PLUS VISITEZ [KITCHENAID.COM/QUICKSTART](https://www.kitchenaid.com/quickstart)

Pour plus d'idées sur l'utilisation, de nouvelles recettes, voir des vidéos de démonstration, l'enregistrement du produit, et plus — notre page de démarrage rapide comprend tout ce dont vous avez besoin pour vous aider à profiter de votre nouveau produit.

RECETTES



GUIDES



VIDEOS



ASSISTANCE



ENREGISTRER



[KitchenAid.com](https://www.kitchenaid.com) | [KitchenAid.ca](https://www.kitchenaid.ca) | USA: 1.800.541.6390 | Canada: 1.800.807.6777

W11104441B  
KNK1012  
02/18

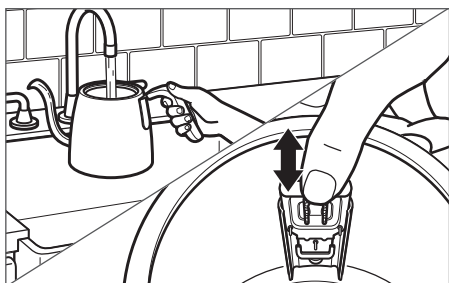
©/™ ©2018 KitchenAid. Tous droits réservés. Utilisé sous licence au Canada.

# PREMIERS PAS

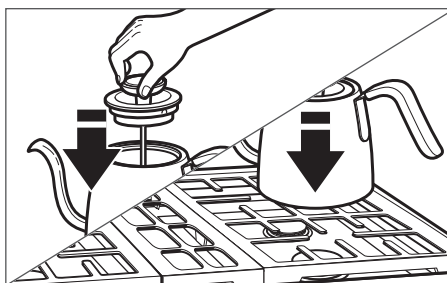
## GUIDE DE DÉMARRAGE RAPIDE

In a few easy steps, you'll be on your way to enjoying something delicious!

Rendez-vous sur [KitchenAid.com/Quickstart](https://www.kitchenaid.com/Quickstart) pour obtenir des instructions complètes et voir des vidéos de démonstration.

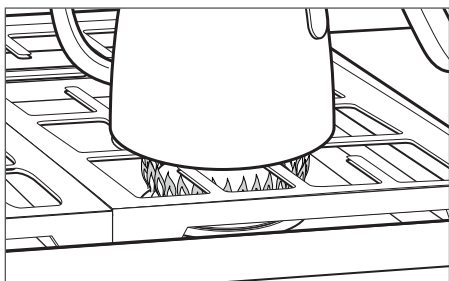


1. Remove the lid, fill the Kettle with room temperature water, and pour at each flow control setting to find your preferred flow control.



2. Fill the Kettle with water, replace the lid, and place on your stovetop burner.

**NOTE:** Your Stovetop Precision Kettle can be used on all cooking surfaces, including induction.









3. Turn burner on to the appropriate level (If using gas stovetop, do not allow gas flames to extend up the side of the Kettle).



4. Once the built-in thermometer indicates that the desired temperature has been reached, turn off the heat and remove the Kettle from the burner.

### BREW/STEEP TEMPERATURE CHART

BEVERAGE	Coffee	Green Tea	White Tea	Oolong Tea	Black Tea	Herbal Tea
						
SUGGESTED TEMPERATURE (C°/F°)	92-96°	80°	85°	90°	95°	100°
	196-205°	176°	185°	194°	203°	212°
SUGGESTED BREW/STEEP TIME (MINUTES)	3-5	1-3	3-5	3-5	4-5	5-7

**NOTE:** For Brew/Steep information at different altitudes, consult your Instructions manual.

# PREPÁRESE



## DESCUBRA MÁS EN [KITCHENAID.COM/QUICKSTART](https://kitchenaid.com/quickstart)

Para más usos, recetas interesantes, videos con demostraciones, registro de productos, etc., nuestra página de guía rápida para comenzar tiene lo necesario para ayudarle a sacar el máximo provecho de su nuevo producto.

RECETAS



GUÍAS



VIDEOS



SOPORTE  
TÉCNICO



REGISTRO



[KitchenAid.com](https://kitchenaid.com) | [KitchenAid.ca](https://kitchenaid.ca) | USA: 1.800.541.6390 | Canada: 1.800.807.6777

W11104441B  
KNK1012  
02/18

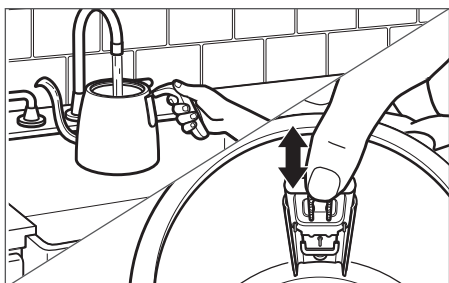
©/™ ©2018 KitchenAid. Todos los derechos reservados. Usada en Canadá bajo licencia.

# PARA COMENZAR

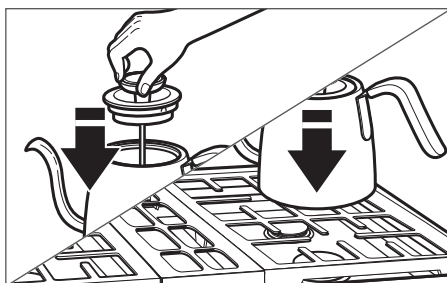
## GUÍA RÁPIDA PARA COMENZAR

In a few easy steps, you'll be on your way to enjoying something delicious!

Para ver instrucciones y videos completos, visite [KitchenAid.com/Quickstart](http://KitchenAid.com/Quickstart) en Internet.

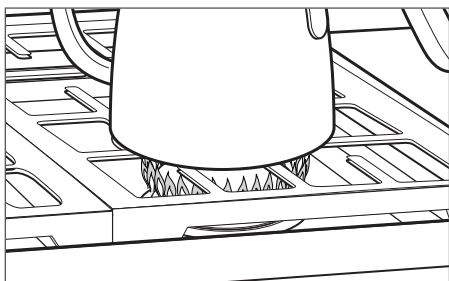


1. Remove the lid, fill the Kettle with room temperature water, and pour at each flow control setting to find your preferred flow control.



2. Fill the Kettle with water, replace the lid, and place on your stovetop burner.

**NOTE:** Your Stovetop Precision Kettle can be used on all cooking surfaces, including induction.









3. Turn burner on to the appropriate level (If using gas stovetop, do not allow gas flames to extend up the side of the Kettle).



4. Once the built-in thermometer indicates that the desired temperature has been reached, turn off the heat and remove the Kettle from the burner.

### BREW/STEEP TEMPERATURE CHART

BEVERAGE	Coffee	Green Tea	White Tea	Oolong Tea	Black Tea	Herbal Tea
						
SUGGESTED TEMPERATURE (C°/F°)	92-96°	80°	85°	90°	95°	100°
	196-205°	176°	185°	194°	203°	212°
SUGGESTED BREW/STEEP TIME (MINUTES)	3-5	1-3	3-5	3-5	4-5	5-7

**NOTE:** For Brew/Steep information at different altitudes, consult your Instructions manual.